

## New Holland Workmaster 25s ROPS Cab

\*\* Shown with optional equipment



Please note: cab is shown in photo with optional accessories.

### New Holland Workmaster 25s ROPS Cab

This ROPS cab is designed and built to fit the New Holland Workmaster 25s tractor.

Designed and Built by:

**Tektite Manufacturing Inc:**  
24157 Hwy 3  
P.O. Box 639  
Winkler, MB  
R6W 4A8  
Canada  
PH: 204-331-3463  
Fax: 204-331-4159  
sales@tektite.ca

One year standard product warranty provided by Tektite.



### Caution

\*\* Please read installation instructions and follow all safety statements before attempting to install this ROPS cab product.

\*\* This ROPS cab is heavy. An over-head hoist or high lift forklift will be needed to lift this ROPS over the machine. It is recommended that a minimum of two people participate during the installation procedure.

\*\* A copy of this installation manual should be kept with the machine operating manuals.

Tektite Manufacturing Incorporated thanks you for purchasing a New Holland Workmaster 25s ROPS cab! Tektite has worked very hard to design and build this ROPS product and we hope that it provides you with many years of ROPS protection.

Tektite's ROPS products are designed to provide safe and dependable service during operation when they are properly maintained according to the instructions. Please read this installation manual carefully before installing and using this ROPS product.

The photos/illustrations provided in this manual may not provide all the detail needed, and are for reference only.

All directions provided are from the reference point of the tractor seat facing the steering wheel. All left and right references are from this view point.

For reference, please fill in the information below. This will assist your dealer in providing service for this ROPS. It is advisable that this information be provided to your insurance company as well in the event that the tractor is lost or damaged.

Vehicle Model: \_\_\_\_\_

ROPS Serial Number: \_\_\_\_\_

Date of Purchase: \_\_\_\_\_

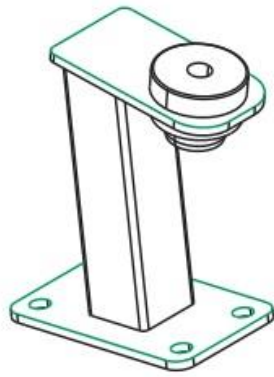
Dealer Name: \_\_\_\_\_

## Parts List Standard Cab:

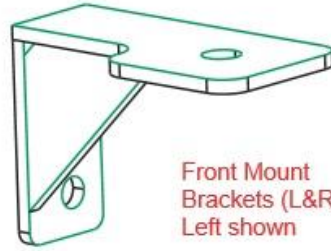
Description	Qty
Hood Shield (pre-installed)	1
Left Flasher Light Bracket w/SMV Mount	1
Right Flasher Light Bracket	1
Front Mounting Brackets	L&R
Rear Mounting Brackets	2
Bolt, Hex, 5/8" x 3", Gr. 8, YD	4
Washer, Flat, 1/4" thick	4
Nut, Flange, 5/8", Gr. 8, YD	4
Nut, Flange, 1/2", YD, Gr. 8	4
Bolt, Flange, 1/2" x 1 1/2", YD, Gr. 8	4
Bolt, Hex, 1/2" x 4 1/2", Gr. 8	2
Step Bolt, 1/4" x 1"	4
Flange Nut, 1/4"	4
Screw, # 8 x 1/2", MB	2
Wire Loop, 1/4"	2

## Parts List Water Heater Kit:

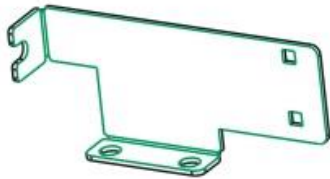
Description	Qty
Hose Clamps, HS-6	2
Zip Ties, Standard	6
3/8NPT x 3/8" Barb, Straight Fitting	1
3/8NPT x 3/8" Barb, 135 Degree Fitting	1
Straight Fitting, 16MM Male, 3/8NPT Female	1



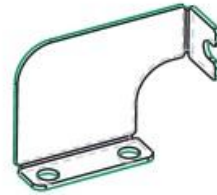
Rear Bracket (x2)



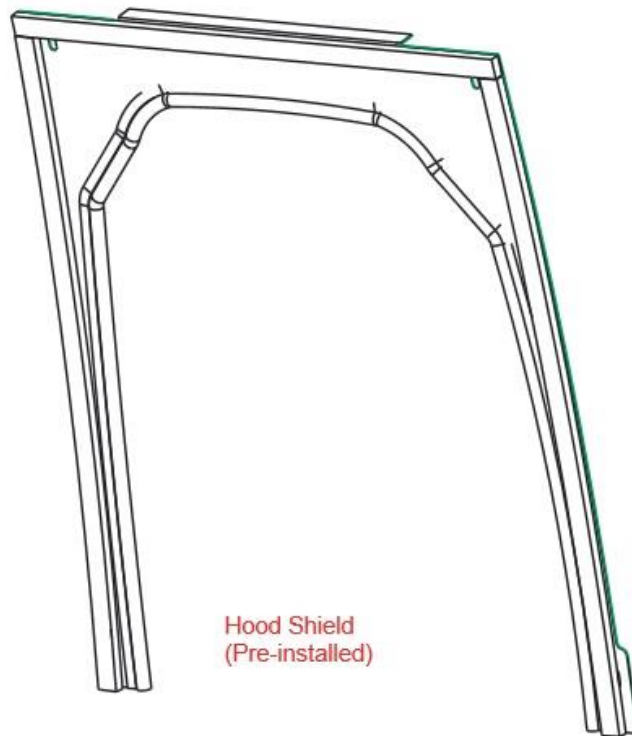
Front Mount  
Brackets (L&R)  
Left shown



LH Flasher Mount



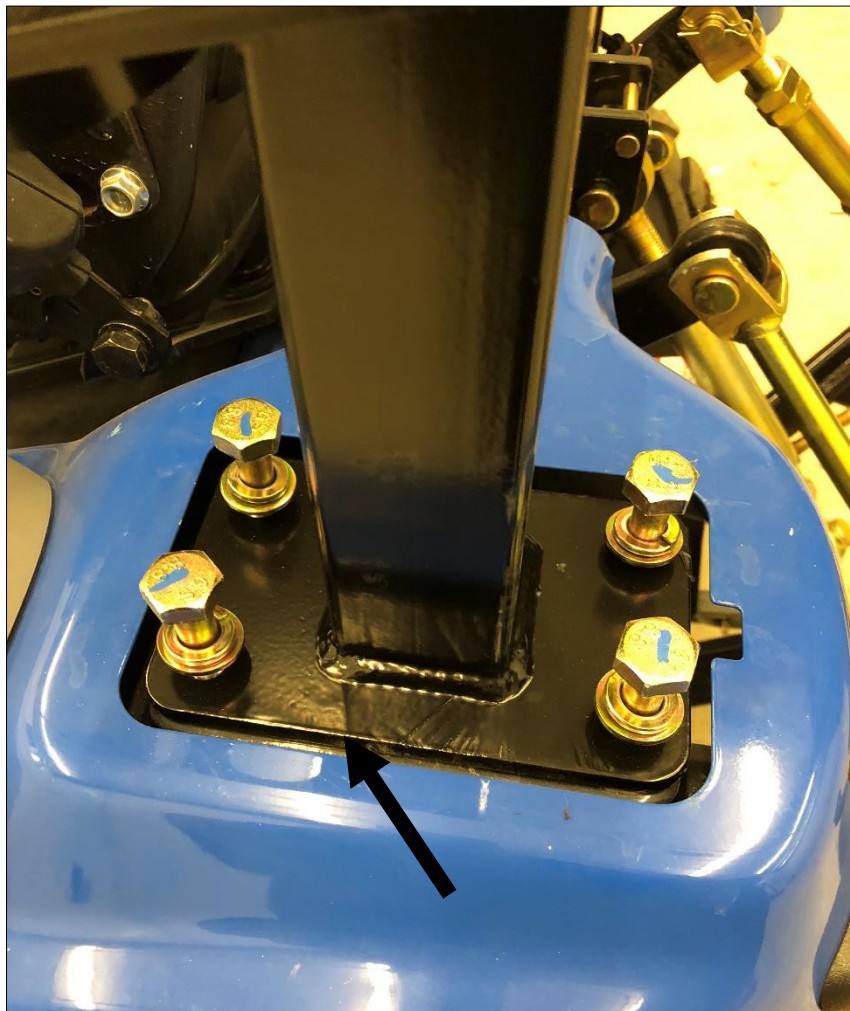
RH Flasher Mount



Hood Shield  
(Pre-installed)

**Standard Cab Installation Instructions:**

- . Park tractor in well ventilated work area. Lower all tractor attachments.
- . Un-bolt the seat belts from the seat and swap sides. The wide recoil side must be on the left side.
- . Un-bolt the hood shield from the cab.
- . Disconnect tractor battery by un-hooking the ground.
- . Un-bolt and remove the 2-post ROPS from the tractor.
- . Remove SMV sign mount and four way flashers from 2-post ROPS.
- . Take the left rear bracket and position where left 2-post ROPS side was mounted. Use factory fasteners and loosely bolt into place the FRONT fasteners only.



- . Take the wider flasher light bracket and position onto the left rear bracket, the bent end will be on the outside. Use the remaining two factory ROPS fasteners for the two bolts.
- . Take the right rear bracket and position where right 2-post ROPS side was mounted. Use factory fasteners and loosely bolt into place, front fasteners only.



- . Take the remaining flasher light bracket and position onto the right rear bracket, the bent end will be on the outside. Use the remaining two factory ROPS fasteners for the two bolts.
- . Take the left front bracket and position against the loader sub-frame. Use provided  $\frac{1}{2}$ " x  $1\frac{1}{2}$ " flange bolts and nuts to loosely attach as shown. NOTE, the mount plate will face forward.



. Take the right front bracket and position against the loader sub-frame. Use provided  $\frac{1}{2}$ " x 1  $\frac{1}{2}$ " flange bolts and nuts to loosely attach as shown. NOTE, the mount plate will face forward.



- . Un-bolt and remove the left fender grab handle.
- . Use the provided  $\frac{1}{4}$ " x 1" step bolts and flange nuts in each hole created by the removal of the grab handle.

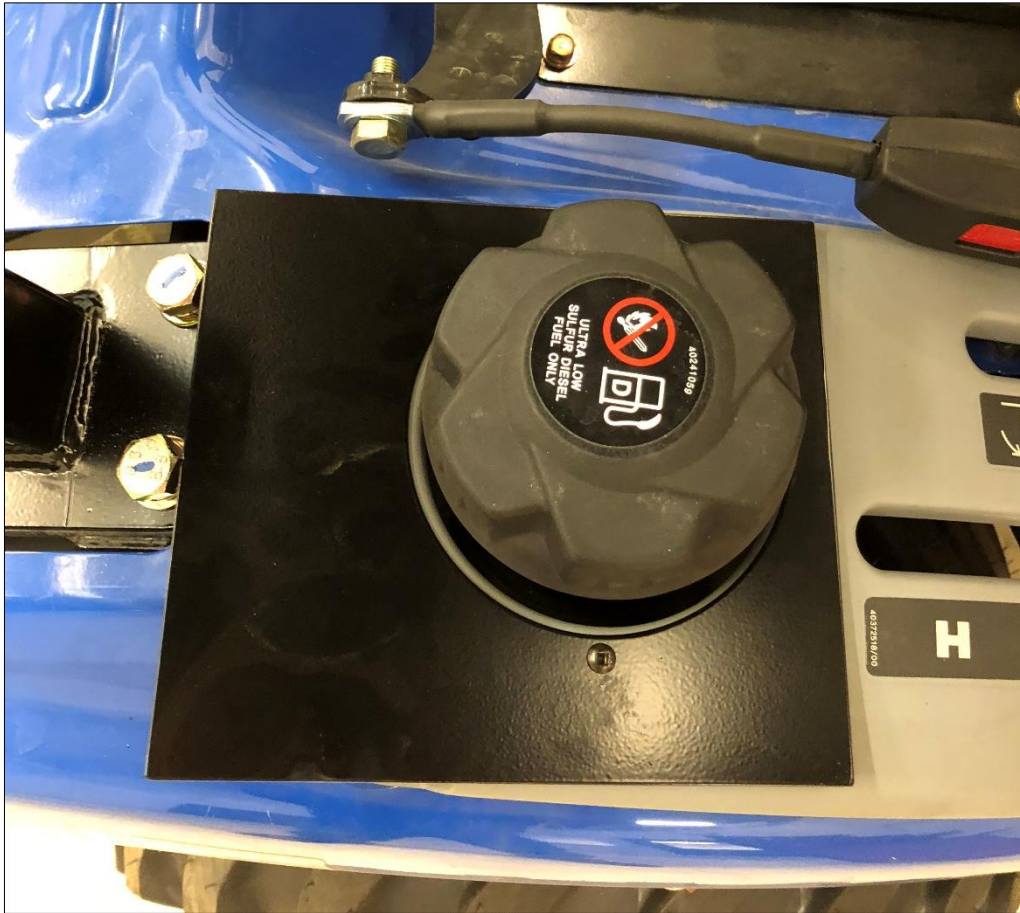


- . Un-bolt and remove the right fender grab handle.
- . Use the provided  $\frac{1}{4}$ " x 1" step bolts and flange nuts in each hole created by the removal of the grab handle.

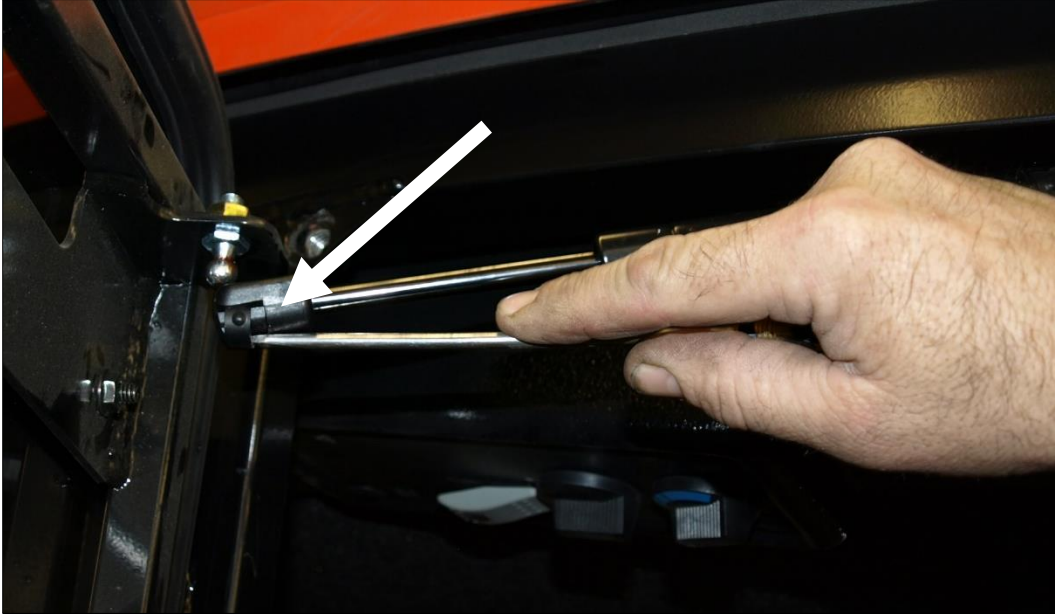




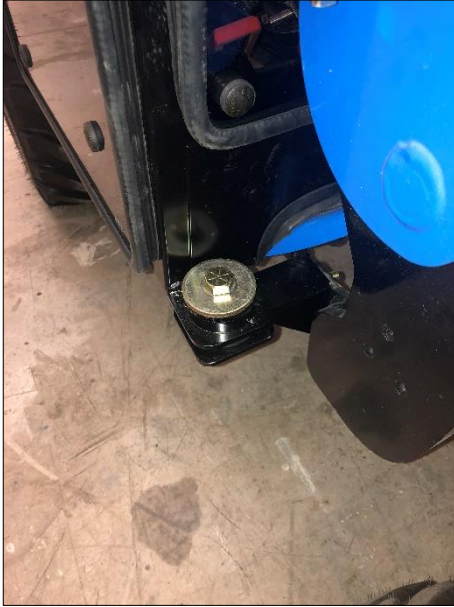
. Take the fuel fill surround plate and position it over the fuel fill. The widest flange is on the rear side. Use the provided # 8 x ½" screws and fasten into place.



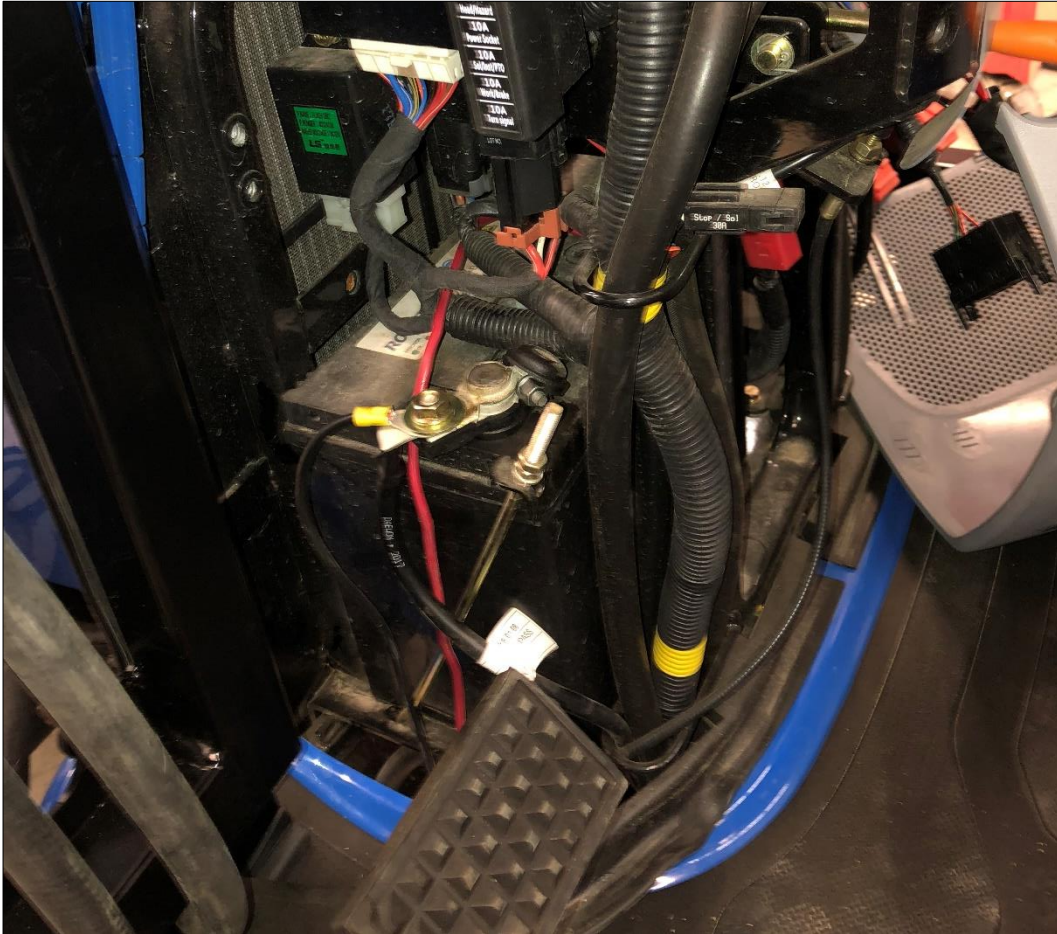
. Return to the cab and remove the doors. To release the gas shock, slide a flat screwdriver underneath the small clip on the end that must be pulled UP in order to pop the shock off the ball stud. **The shock will release very easily when this is accomplished.** Lift the door assembly straight up and off the cab and put aside for now.



- . Take one of the cab lift bolts,  $\frac{1}{2}$ " x  $4 \frac{1}{2}$ " hex bolt, and bolt to the weld nut located at the top rear corner of the left door opening.
- . Repeat for the right side.
- . Attach a lift strap or chain to the two lift bolts and then attach to an overhead hoist or forklift.
- . Un-bolt cab from shipping pallet and start to lift cab up.
- . Carefully lift straight up and position directly over tractor.
- . Lower cab down slowly until rubber isolators and mounting plates are touching each other.
- . For the front mounts the heavy flat washer is on top of the cab mount plate, with the  $\frac{5}{8}$ " x 3" hex bolt and flange nut.



- . For the rear mounts, the heavy flat washer goes underneath the bracket plate.
- . Once all four fasteners are started, release tension on the hoist.
- . Apply 205 ft-lbs torque to the four ROPS isolator fasteners first. Tighten the front and rear brackets last. All  $\frac{1}{2}$ " fasteners can be torqued to 100 ft-lbs.
- . Remove the cab lift bolts, store if cab is to be removed seasonally.
- . Remove the under steering wheel plastic shroud.
- . Route the cab power wires under the platform and towards the battery under the steering wheel. Connect red wire to the positive terminal with the provided  $\frac{1}{4}$ " loop. Shorten wire if necessary and install connector. Connect the black wire to the negative terminal with the provided  $\frac{1}{4}$ " loop. Shorten wire if necessary and install connector.

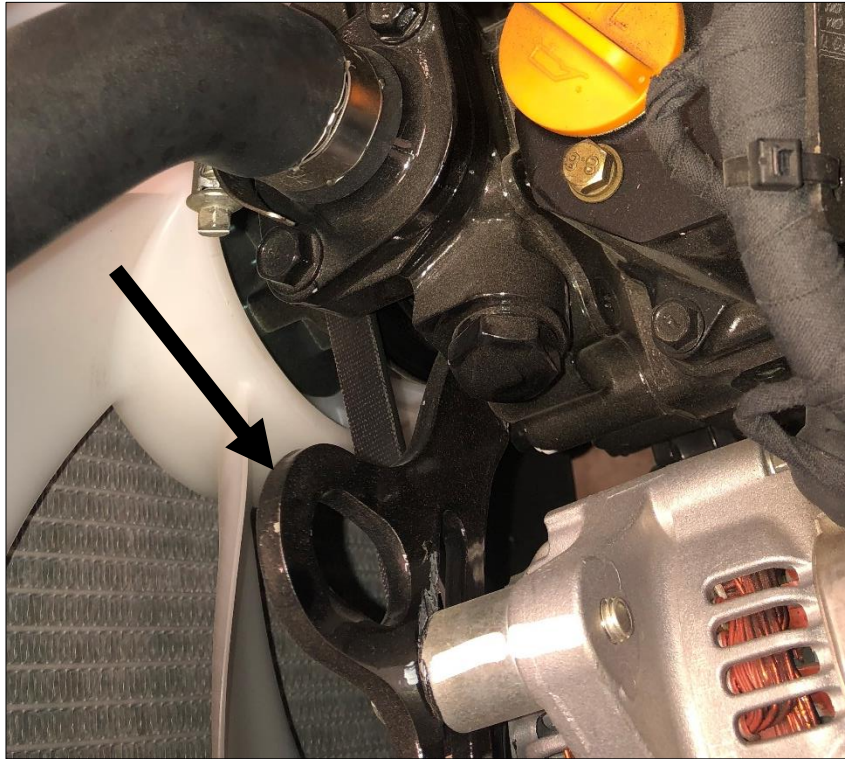


. Re-install the under steering wheel plastic shroud.

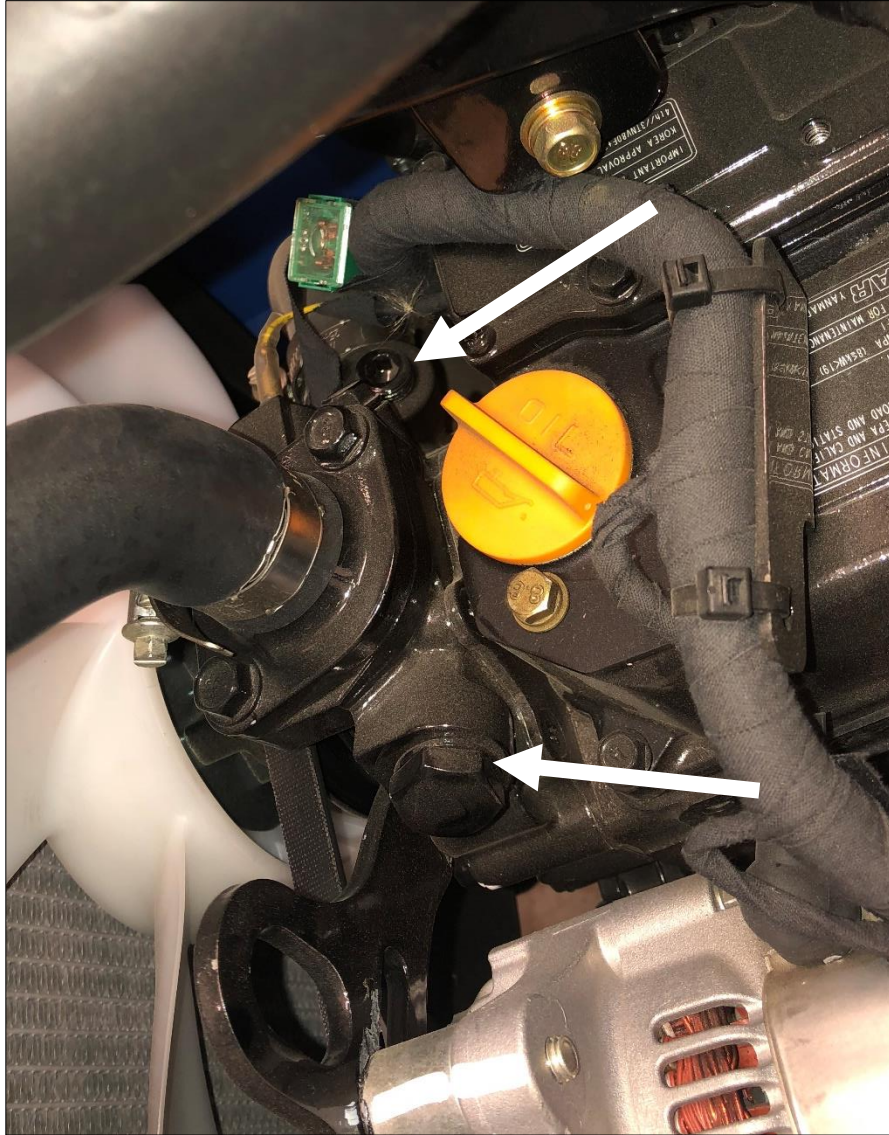
#### Heater Option

. Drain the engine antifreeze.

. Release tension off the alternator by unbolting tensioner from the alternator.



- . Remove the alternator tensioner from the engine.
- . Slip the belt off the alternator, and let it hang down all the way.
- . Locate the two plugs shown in the photo below and remove.



- . Take the 3/8NPT x 3/8" barb straight fitting and install into the open port on the LEFT side of the engine. Be sure to use a silicone sealant on the threads of the fitting to prevent water leakage.
- . Take the 16MM to 3/8NPT adapter and install into the remaining open port on the right side of the engine. Use a silicone sealant on the threads of the fitting to prevent water leakage.
- . Take the 3/8NPT x 3/8" barb, 135-degree fitting and install into the adapter. Use a silicone sealant on the threads of the fitting. (NOTE: a 90 degree fitting is shown in the next photo)



- . Slip the belt back onto the alternator.
- . Re-install the tensioner back onto the engine, and apply tension to alternator.
- . Route the heater hoses from the cab into the engine bay, keeping away from moving components and hot areas.
- . Route to fitting on left side of engine first and cut hose. Use provided HS-6 hose clamp and attach hose onto the barb fitting.



- . Route the other hose to the remaining fitting, cut hose if necessary, and using provided HS-6 hose clamp, attach hose onto the barb fitting.



- . Use provided zip ties to retain hoses and tidy up installation.
- . Re-fill the engine antifreeze.
- . Start the tractor and turn on the heater fan switch. Run engine at high RPM so that engine warms up and the thermostat will cycle. Continue adding engine coolant to get air out of the system. You will need to top up the coolant system a few times to get all air pockets out of the heater hoses. When successfully purged, air will be VERY HOT at the heater vents.
- . Re-install the cab hood shield.



- . Take the left flasher light and fasten to tab on left side mount with original hardware. Route wire harness down through rear notch in fender and re-connect the harness.
- . Take the right flasher light and to tab on the right side mount with original hardware. Route wire harness down through rear notch in fender and re-connect the harness.
- . Take the SMV sign mount and bolt the small tab to left flasher bracket with original hardware.



. Use a black silicone to seal the cab seals to the tractor to minimize areas of water entry.