

John Deere WAM 1600 Turbo, Series 2 or 3 ROPS



John Deere JD1600S3-001

This ROPS is designed and built to fit:

John Deere WAM 1600 Turbo Series 2 or 3.

Designed and built by:

Tektite Manufacturing Inc:

P.O. Box 639, 427 Buffalo Street

Winkler, MB, Canada

R6W 4A8

PH: 204-331-3463

parts@tektite.ca

One-year standard product warranty provided by Tektite Manufacturing Inc.



DO NOT PROCEED FURTHER UNTIL YOU HAVE READ THE INFORMATION BELOW.

- 1) Always wear personal protective equipment.
- 2) A minimum of two people is necessary to safely install the cab.
- 3) This ROPS cab is heavy. A lift assist device such as an overhead hoist or high lift forklift is required.
- 4) Ensure your work area is well ventilated. The installation requires the starting of the tractor which will produce dangerous carbon monoxide fumes.
- 5) Read through the entire installation manual first.
- 6) Follow the installation instructions in order.
- 7) Reading the operators manual prior to using the ROPS cab.

Tektite Manufacturing Incorporated thanks you for purchasing a John Deere WAM 1600 ROPS ROPS cab! Tektite has worked very hard to design and build this ROPS product and we hope that it provides you with many years of protection.

Tektite's products are designed to provide safe and dependable service during operation when they are properly maintained according to the instructions. Please read this installation manual carefully before installing and using this product.

The photos/illustrations provided in this manual may not provide all the detail needed and are for reference only.

All directions provided are from the reference point of the tractor seat facing the steering wheel. All left and right references are from this viewpoint.

For reference, please fill in the information below. This will assist your dealer in providing service for this product. It is advisable that this information be provided to your insurance company as well in the event that the tractor is lost or damaged.

Vehicle Model: _____

Tektite Serial Number: _____

Date of Purchase: _____

Dealer Name: _____

Parts List Standard ROPS:

Mounting Parts Bag:

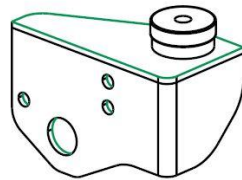
Description	Qty
Flat Structural Washer, 1/4" thick	4
Bolt, Hex, 5/8" x 3", Gr. 8, YD	4
Nut, Flange, 5/8", Gr. 8, YD	4
Bolt, Flange, M12 x 35 x 1.75, Gr. 10.9, YD	3
Nut, Flange, M12, Gr. 10.9, YD	1
Chassis Isolator, Rubber, 5/8" (pre-installed)	4

Loose Components:

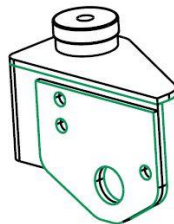
Description	Qty
Rear Cab Mounting Brackets	L&R
Front Cab Mounting Brackets	L&R

If Electrical Options Ordered:

Description	Qty
Wire Loop Yellow, 1/4"	2
Wire Loop Yellow, 3/8"	2
Zip Ties, Standard Length	4



Left Front Bracket



Right Front Bracket



Right Rear Bracket

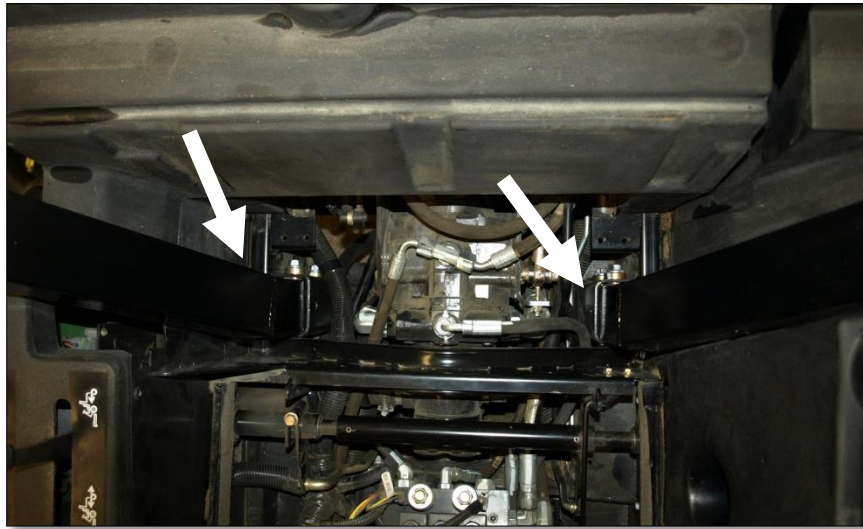


Left Rear Bracket

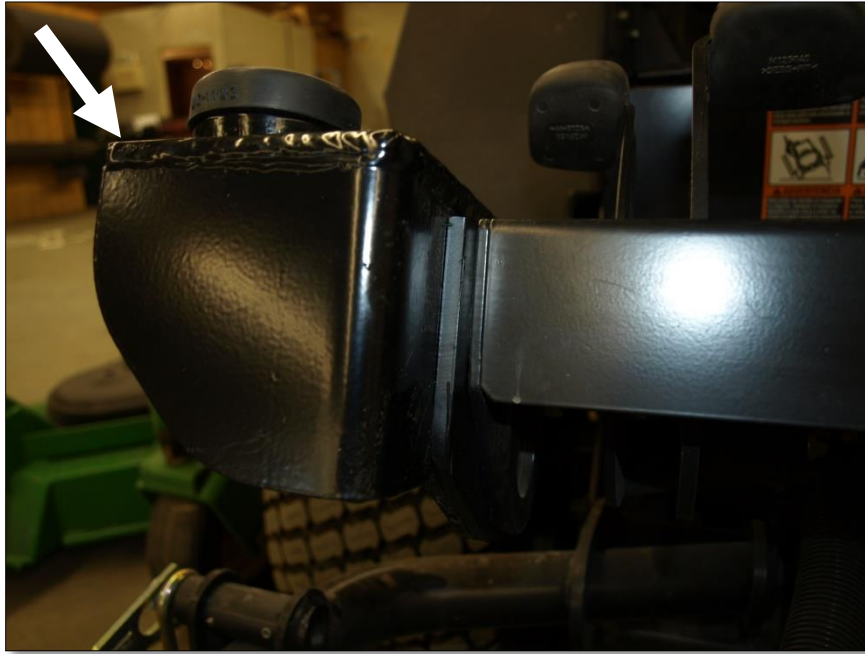
Standard Cab Installation Instructions:

Park the mower in a well-ventilated area, put the loader down along with all tractor attachments.

1. Un-bolt and remove the shield between the lower 2-post ROPS sockets fastened to the front of the hood.
2. Un-bolt and remove the left and right 2-post ROPS socket shields.
3. Un-bolt and remove the 2-post ROPS assembly. It will be necessary to raise the wing deck on the side you are removing fasteners from in order to get adequate access to the mounting bolts.
4. Drop the front and side wing decks to mowing position, and park the mower in a well ventilated area with access to overhead hoist or fork lift.
5. Take the left rear bracket and slide into the left 2-post ROPS socket and fasten with the factory hardware. Loosely attach only.



6. Take the right rear bracket and slide into the right 2-post ROPS socket and fasten with the factory hardware. Loosely attach only.
7. Take the right front bracket and fasten to the front operator platform as shown below. Use the provided M12 x 35 flange bolts for the front fasteners and flange bolt and nut for the rear fastener.



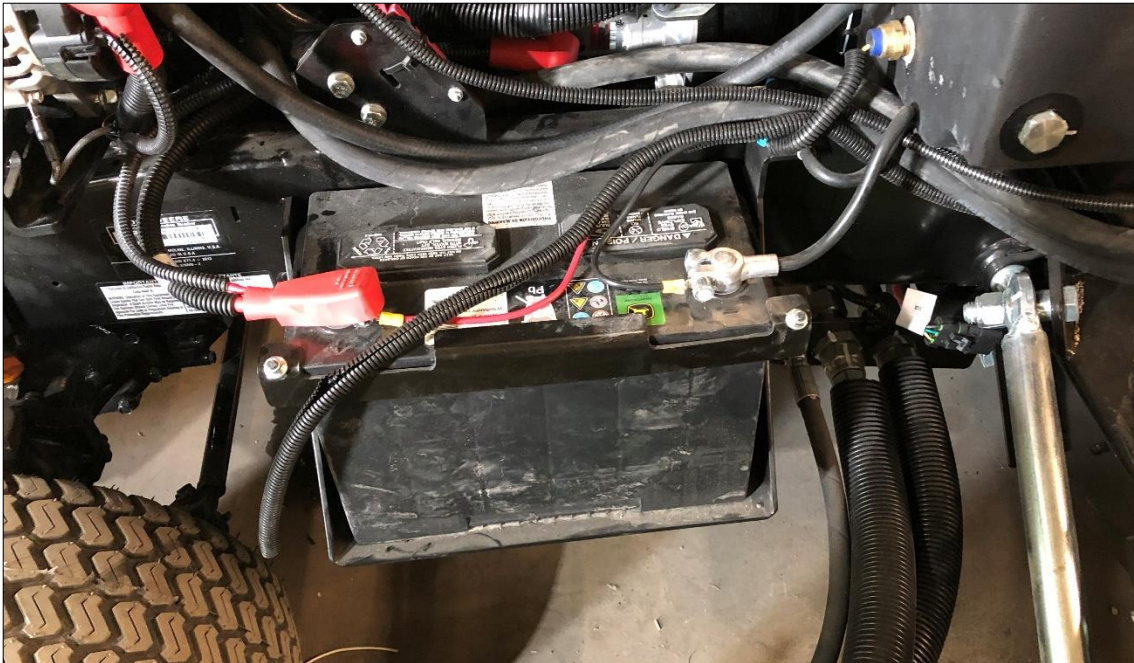
8. Un-bolt the front deck stop bracket on left front of operator foot platform and place the left front bracket outside of it. Use the existing factory hardware and bolt into place.



9. Attach a lift strap or chain between the front and rear light bar tubes and connect to an overhead hoist or forklift.

10. Un-bolt the shipping pallet from the cab and lift up off of the shipping pallet.

11. Position the ROPS directly over the machine above the operator platform and slowly lower down onto the front and rear mounting brackets.
12. For the rear mounts, use the provided 5/8" x 3" hex bolt, heavy flat washer through the top of the ROPS mount, and then the 5/8" flange nut underneath the mounting bracket plate. For the front mounts, use the 5/8" x 3" hex bolt through the ROPS mount and isolator, then the heavy flat washer and flange nut from underneath the bracket.
13. As soon as all mounting bolts are started, you can apply final mount torque. For the 5/8" ROPS fasteners, use 205 ft-lbs, for the M12 bolts use 98 ft-lbs.
14. Remove lift strap/chain from over-head hoist/forklift.
15. If electrical options have been ordered, run the main power and black wires from the back right C-post towards the area and where the battery is located. Connect the red wire to the positive side of the battery with the provided loop connector, shortening wire as needed and crimping wire into place. Connect the black wire to the negative side of the battery with the provided loop connector, shortening wire as necessary and crimping connector on.

**NOTE:**

If ROPS is equipped with a Golf Ball Protection Package, it may be necessary to adjust the door latches after installation is complete. The striker pin, door latch, and striker mounting plate may need to be loosened and adjusted slightly after installation due to the ROPS frame flexing slightly during ROPS installation.